

## Transportation Activity Quarterly Update – September 2009

---

Report of Transportation Unit Manager to the Activity and Monitoring Committee on 10 September 2009.

Please note – this report has been edited for information relating to Current Projects. The full report can be viewed at <http://www.franklin.govt.nz/YourCouncil/Meetingsandminutes/Meetingminutes/t/abid/284/Default.aspx>

### EXECUTIVE SUMMARY

The purpose of this report is to provide information on the issues and activities pertaining to the Transportation Activity (including activities within Land Transport and Solid Waste) over the three month period to the end of June 2009.

### DISCUSSION

#### Financial Information – Land Transport

##### *Operating Budget*

	<b>Annual Budget (000s)</b>	<b>YTD Budget (000s)</b>	<b>YTD Actual (000s)</b>
Subsidised Maintenance	\$8,255	\$8,255	\$8,342

(Includes pavement maintenance/bridge maintenance/amenity and safety maintenance/street cleaning/traffic services/carriageway lighting/bus shelter maintenance and professional services costs).

Overall the operating budget for the transport activity was 1.4% over spent. This was primarily due to costs associated with the storm event that occurred early in the financial year (late July 2008). Efforts were made to reduce the deficit throughout the year with some maintenance activities deferred to the 2010 year.

Non-Subsidised Maintenance	\$175	\$175	\$200
-------------------------------	-------	-------	-------

(Includes footpath maintenance, paper road, carpark maintenance, and Passenger Transport subsidy costs).

Funds were used from the car park maintenance budget to commence work on the Franklin District Transport Model. This work is continuing. Additional costs were also experienced in footpath maintenance as work

commenced in Waiuku was continued to respond to the large number of requests received in that area.

***Capital Budget***

	<b>Annual Budget (000s)</b>	<b>YTD Budget (000s)</b>	<b>YTD Actual (000s)</b>
Renewals	\$10,002	\$10,002	\$9,612

(Includes pavement renewal work/drainage replacements/  
resurfacing/footpath replacement work and bridge replacement).

Planned renewal work on Mill Road and Pukekohe East Road was not undertaken in the 2009 year as subsidy from the New Zealand Transport Agency was not approved. These sites will be closely monitored to determine when the renewal work will need to be carried out.

New Works	\$9,915	\$9,915	\$9,097
-----------	---------	---------	---------

(Includes minor safety work/street light improvements/seal extension/seal widening/street improvements/subdivision associated works/bridge widening and strengthening, advanced land purchase and other improvement projects).

The under spend on new works was forecast throughout the year and was associated with seal widening work not being undertaken to offset an overspend on the Kingseat – McKenzie intersection upgrade in 2008.

<b>Total</b>	\$19,917	\$19,917	\$18,709
--------------	----------	----------	----------

### **Physical Works - Land Transport**

#### ***Pavement Rehabilitation/Renewal and Seal Widening Programme***

<b>Sites:</b>	<b>Length:</b>	<b>Status:</b>
Edinburgh St Roundabout	60	Complete
Queen Street (Pukekohe)	124	Complete
Wesley Street/ Queen Street Roundabout	85	Complete
Queen Street/Harris St R/Bout	65	Complete
Mill Road	750	Deferred
Pukekohe East Road	290	Deferred
Kitchener Road (Pukekohe)	300	Complete
East Coast Road	2500	Complete
Pinnacle Hill Road	1596	Complete
Highway 22	1029	Complete
Tuakau Bridge -Port Waikato Road	541	Complete
Waiuku Road	556	Complete
Mangatangi Road	1190	Complete
Logan Road	986	Complete
Queen Street (Waiuku)	334	Complete
Karioitahi Road	1029	Complete
Lyons Road	273	Deferred
Masters Road	965	Deferred
Gun Club Road	617	Complete
Taurangururu Road	682	Complete
Ostrich Road	1705	Complete
Charles Road	1064	Deferred
Charles Road	417	Deferred
Awhitu Road	2177	Yet to start
Boundary Road west (provisional site)	879	Deferred
Barriball Road (provisional site)	390	Complete
Mercer Ferry Road (Seal Widening)	1130m	Complete

<b>Sites:</b>	<b>Length:</b>	<b>Status:</b>
Ridge Road (Seal Widening)	580m	Complete
Batty Road (Seal Widening)	1030m	Complete
Morley Road (Seal Widening)	1340m	Complete

### ***Seal Extension Sites***

<b>Sites</b>	<b>Length</b>	<b>Status</b>
Coe Road	887	Complete
Parakau Road	314	Complete
Muir Road	861	Complete
Rewarewa Road	380	Complete
Chapman Road	700	Complete
Port Waikato-Waikaretu Coast Road - (provisional site)	2996	On hold

### ***Minor Safety Sites***

Safety improvements were completed at the following sites late in 2008/2009

- River Road (Tuakau) – Les Batkin Reserve entrance;
- Weighpit – River Road north of Les Batkin Reserve;
- Kingseat Road – seal widening near Waiiau Pa Road;
- Buckland Road – Logan Road intersection upgrade and pedestrian facility across rail corridor; (Underway)
- King Street (Waiuku) – pedestrian facility;
- Kitchener Road (Waiuku) – pedestrian facility; (planned for May/June);
- Waiuku Road – investigate options for upgrading intersection with Baldhill Road (near new Community Hall - planned for May/June) and
- Awhitu Road seal widening, footpath and threshold signage.

### **Road Safety**

There were two fatal crashes in this quarter on roads in the Franklin District, with two fatalities resulting. These were on State Highway 2 and on Linwood Road.

The fatal crash reports investigating the crash on Linwood Road indicated that there were no road factors that contributed to the loss of control crash.

Other road safety initiatives completed this quarter were:

### ***Parking Near Schools Campaign***

19 Franklin Schools throughout the region took part in this campaign. The response from the schools was very positive and driver behavior was noticeably different during the week that enforcement took place from the

parking wardens and Police. The 'Parking near schools' pamphlet was useful for school staff in terms of what were potentially enforceable issues.

### ***Franklin Students Against Drink Driving (SADD) Workshop***

19 students from the Franklin region attended the first Franklin SADD workshop held at Waiuku College on July 2.

The format of the day was decided by the Waiuku SADD students and organised by Franklin District Council Road Safety Coordinator.

The workshop was supported by Waiuku Subway, Serious Crash Unit, Waiuku Volunteer Fire Brigade, Brian Roberts Towing, Alcohol Healthwatch and the Brain Injury Association.

The students who attended thought that the day was most valuable, with very positive feedback received.

This will be an annual event and will be held at Waiuku College again next year.

The Waiuku SADD group were excellent hosts and are a very positive group of students to work with.

### ***TravelWise Programme***

Harrisville and Valley Schools have completed working party meetings and are ready to launch their school travel plans.

Harrisville will have the official launch of their travel plan on Monday 21 September 2009 at 9 am at a school assembly.

Valley School will officially launch their travel plan early in term four, with a date yet to be decided by the school.

### ***RoadSafe Auckland Road Safety Application***

FDC road safety supported an application made by Pukekohe East Primary School to develop four road safety brochures concerning speed, parking, bus safety and passenger safety. This has been a work in progress since last year (with numerous visits made to the school), they are now completed and will be given out to parents of school children.

### **Customer Service Requests - Land Transport**

For the last quarter (to 30 June 2009), the number of customer requests received by the Network Management Consultant (Opus International Consultants Limited) were as follows:

- service requests – 242;
- road opening notice applications – 64;
- access control inspection requests – 21;
- over-weight application (for bridge crossings) – 27; and
- abandoned vehicles (removal from roads) – 17.

The service requests were categorised as follows:

<b>Category</b>	<b>April 2009</b>	<b>May 2009</b>	<b>June 2009</b>
Emergency Works	1	2	2
Road Drainage	11	19	13
Safety	17	19	19
Sealed Road	17	6	17
Traffic Services	11	12	8
Unsealed Road	1	11	6
Vegetation	8	2	8
Footpath	3	10	14
Other	1	1	3
<b>Total</b>	<b>70</b>	<b>82</b>	<b>90</b>

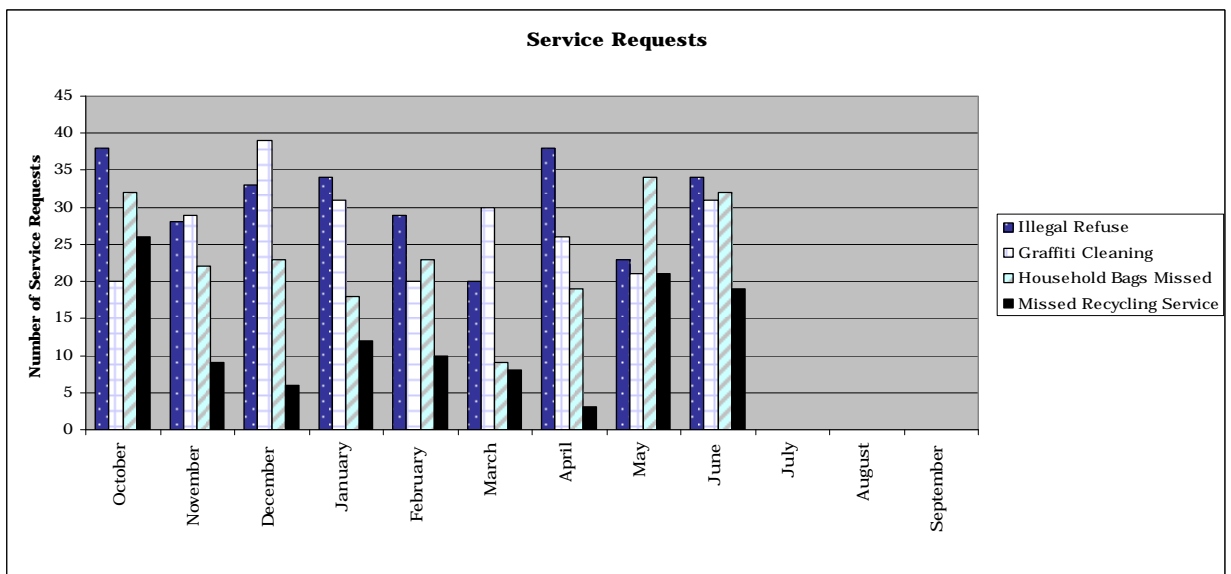
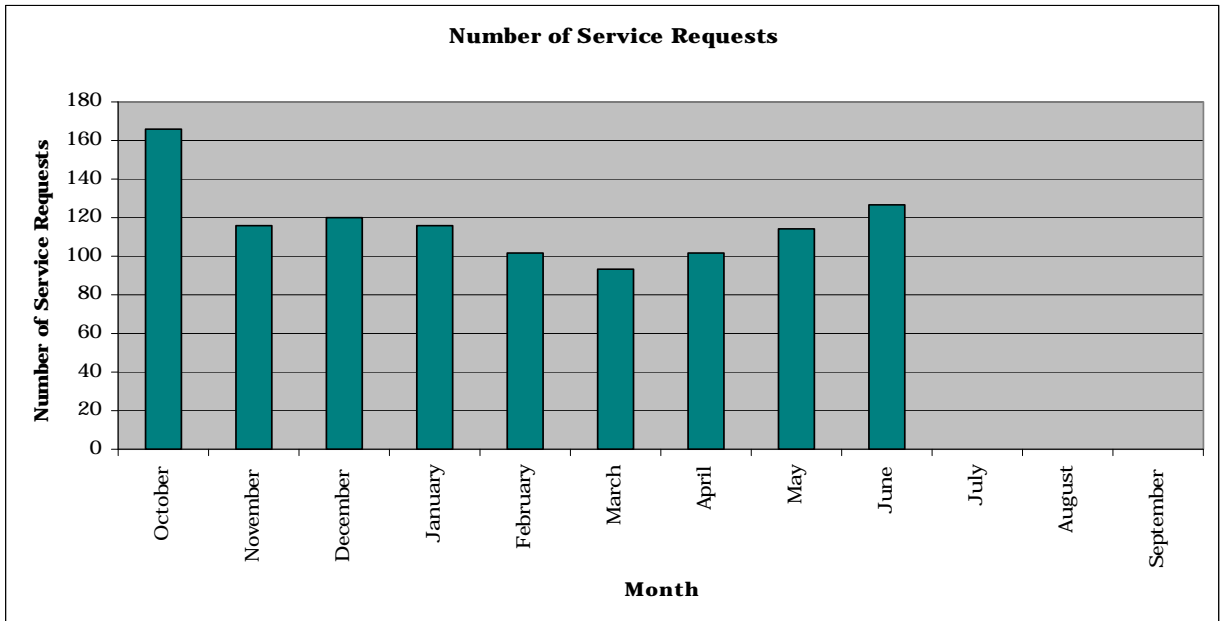
### **Customer Service Requests - Solid Waste**

For the fourth quarter of the year, from 1 April 2009 to 30 June 2009 the number of service requests received by the solid waste team were as follows:

<b>Category</b>	<b>April 2009</b>	<b>May 2009</b>	<b>June 2009</b>
Illegal Refuse	38	23	34
Graffiti Cleaning	26	21	31
Litter Picking	0	0	2
Dead Animals	3	0	0
Household Bags Missed	19	34	32
Deliver New MGB	5	4	3
MGB Replaced - Damaged	0	0	0
MGB Replaced - Lost or Stolen	0	2	0
MGB not Emptied	0	1	0
MGB Repair	0	0	0

Contractor Spilling Refuse	0	0	0
Missed Recycling Service	3	21	19
New Recycling Household	1	4	1
Deliver Additional Recycling Crate	7	4	4
Spilt Recycling	0	0	0
<b>Total</b>	<b>102</b>	<b>114</b>	<b>126</b>

MGB = Wheelie Bins



Note that this is the last quarter that the solid waste team will report on graffiti cleaning as this function has been transferred to Safer Communities Unit as from 1 July 2009.

Counties Power have provided information on service requests received by them associated with street lighting. For the quarter ended June 2008 they received the following requests

Month	Number of Requests	Average Response(Days)	Maximum Response (Days)
April 2009	41	9	31
May 2009	56	7	41
June 2009	32	10	50

Of note the response times include those locations where cable faults may be the cause of the street light outage and these can be more difficult to identify and repair.

### **Traffic Counts**

Traffic counts undertaken in the last quarter include:

- April 2009 – 13 counts undertaken;
- May 2009 – 22 counts undertaken;
- June 2009 – 14 counts undertaken.

Please note that traffic count data is submitted in its raw format and seasonal adjustments have yet to be applied. HCV refers to Heavy Commercial Vehicles and LCV to Light Commercial Vehicles. Refer to Attachments 2.2-2.4.

## **Operational Issues - Land Transport**

Much of this quarter was focussed on the consultation associated with the Long Term Council Community Plan 2009-19 (LTCCP) as this generated a large amount of interest. However maintenance work on the network continued.

Structural inspections of several bridges in the District identified areas of concern. Specifically urgent work is required on two bridge culverts located on Serpell Road (with one structure requiring replacement in 2010), the bridge deck on the single lane bridge on Parker Lane is to be replaced and temporary support is in place until this can be achieved.

Recycled concrete material was put to good use in Woodlands Road in Pukekohe to line a large roadside drain. The concrete material was salvaged from areas of footpath removal, crushed to an appropriate size and then re-used. The material would otherwise have been transported to a land fill facility. Further re-use of concrete and other materials is being encouraged with our contractors.

In May 2009 the final copy of the Road Infrastructure Safety Assessment Report undertaken on the Franklin road network was received from the New Zealand Transport Agency (NZTA). The report recommends:

- Reviewing the installation of guard rails particularly on bridges and adjacent to drop-offs on higher volume roads;
- Reviewing the consistency of installation of edge marker posts;
- Addressing the high percentage of flushing and polished seal chip evident on the roads;
- Review the installation of curve warning signs on out-of-context-curves;
- Increasing the road and shoulder widths on higher volume roads to achieve significant safety benefits.

Subsequent to this the NZTA again visited Franklin in May to undertake a technical audit of the road network to determine if the level and quality of roading maintenance being carried out by Franklin District Council is realistic and acceptable, that structural and corridor maintenance is meeting (not exceeding) maintenance needs, to ensure that the RAMM database is being adequately managed, and that there is progress towards achieving a balanced whole of life maintenance programme. Attachments 2-2.1 is a copy of the executive summary from their final report.

## **Contractor Performance - Land Transport**

All maintenance contractors are performing adequately at present.

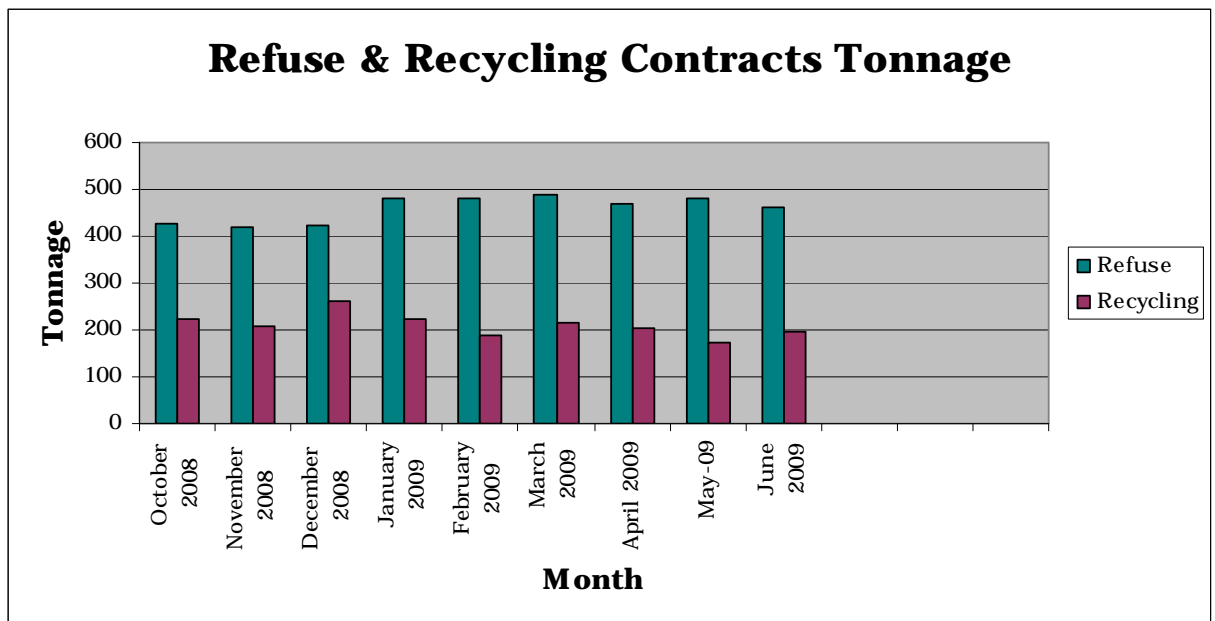
## **Contractor Performance - Refuse and Recycling Contracts**

### ***Contract RE05/28 Envirowaste***

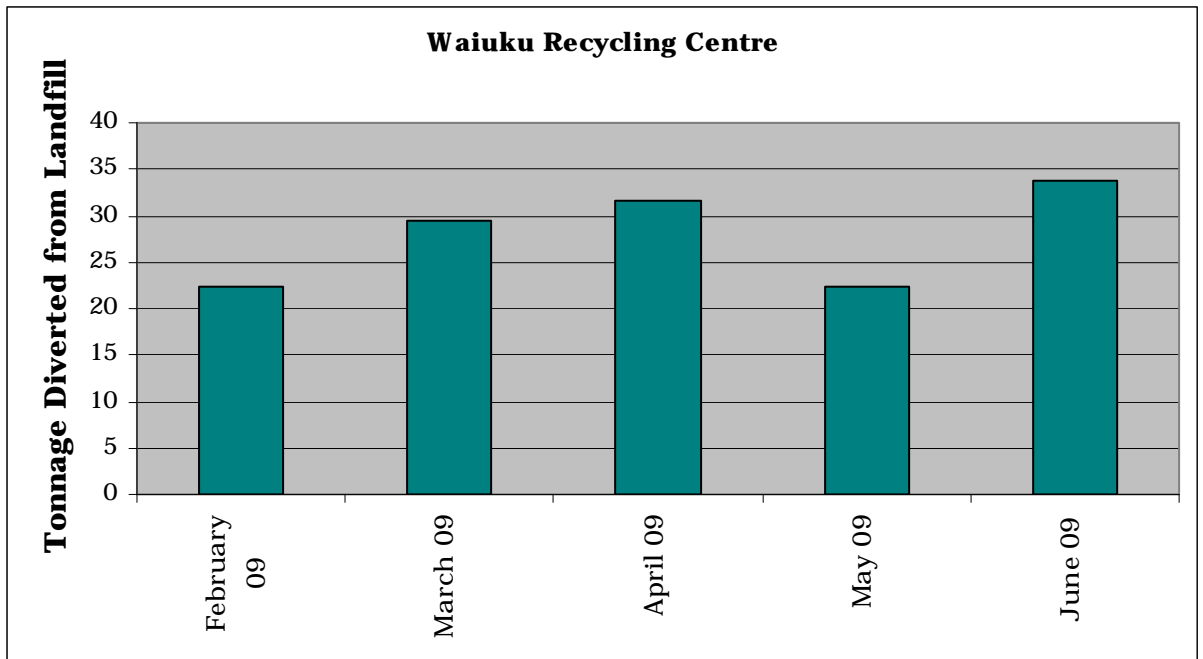
**Contract RE05/29 Transpacific Allbrite Limited**

EnviroWaste Services Limited has added a new waste truck to their service. The new vehicle was advertised in local papers explaining to residents to put refuse out at the advertised time of 7.30 am. This resulted in a quicker collection as they didn't need to empty as often. The downside of this resulted in missed collections. EnviroWaste did go back and collect. Transpacific Allbrite missed collections were due to an increase in recycling. We have been in discussions with Allbrites to go to a five day contract. This collection has to align with EnviroWaste to keep collections on the same day. This should reduce the amount of missed streets for Wednesday and Thursday collections.

<b>Refuse and Recycling Contracts</b>	<b>Tonnes - Refuse</b>	<b>Tonnes - Recycling</b>
April 2009	470.29	204.96
May 2009	482.17	174.40
June 2009	463.01	195.03



**Waiuku Recycling Centre**



The Waiuku Transfer Resource Recovery Centre has now been operating for six months. Business has been slightly slower over the winter months, but the facility is slowly building up a regular customer service. Positive feedback is being received from customers attending the centre shopping for recovered items.